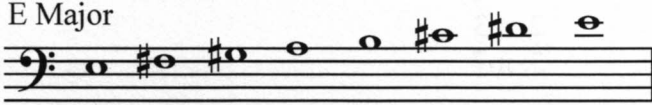
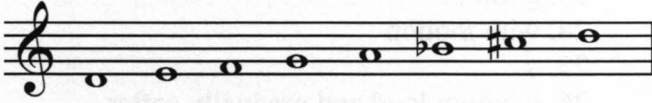
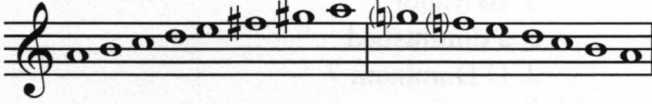
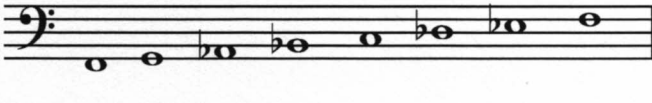

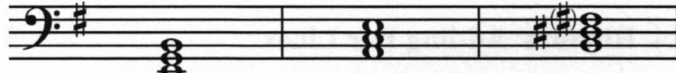
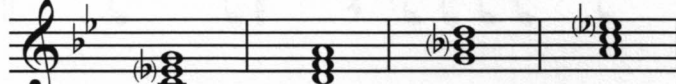



Please read *Guidelines for Grading Theory Tests*.

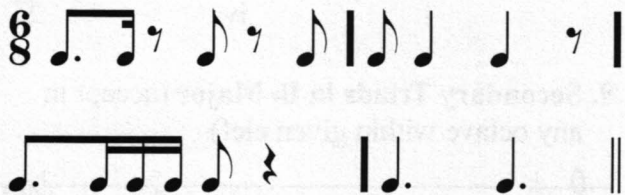
| | Points |
|---|--------|
| 1. Major Key Signatures | 5 |
| A ^b Major, C [#] Major, D ^b Major, A Major, E ^b Major | |
| 2. Minor Key Signatures | 4 |
| g minor, b minor, e minor, c minor | |
| 3. Scales | 4 |
| E Major | |
|  | |
| d minor, harmonic form | |
|  | |
| a minor, melodic form | |
|  | |
| f minor, natural form | |
|  | |
| 4. Chromatic Scale on F | 1 |
|  | |
| 5. Intervals | 5 |
| (P5), M2, m7, P4, m6, M3 | |
| 6. Triads - Naming | 5 |
| (Do not delete points if incorrect figured bass is included) | |
| (C Major), b diminished, A ^b Major a minor, c [#] diminished, d diminished | |

| | Points |
|---|--------|
| 7. Triads - Figured Bass | 4 |
| (⁵ / ₃) ⁶ / ₃ ⁶ / ₄ ⁵ / ₃ ⁶ / ₃ | |
| 8. Primary Triads in e minor (accept in any octave within given clef) | 3 |
|  | |
| i iv V | |
| 9. Secondary Triads in B^b Major (accept in any octave within given clef) | 4 |
|  | |
| ii iii vi vii ^o | |
| 10. Scale Degree Names | 6 |
| a. Primary d. Secondary | |
| b. Secondary e. Primary | |
| c. Primary f. Secondary | |
| 11. Dominant 7th Chords (accept in any octave) 4 | |
|  | |
| Maj: V ⁶ / ₅ Maj: V ⁶ / ₇ Maj: V ⁶ / ₅ min: V ⁶ / ₇ | |
| 12. Cadences | 3 |
| Authentic Half Plagal | |

13. **Rhythm: Adding Notes** (accept eighth and sixteenth notes that are attached with a beam) 4



14. **Rhythm: Adding Bar Lines** 3



15. **Terms** 8

- tranquillo*
- ostinato
- turn
- trill
- B \flat and A \sharp
- cantabile*
- vivo*
- largo*

16. **Historic Periods** 3

- Baroque
- (Classical)
- Romantic
- 20th & 21st Centuries (Contemporary)
(accept either)

17. **History - Composers** 2

- J.S. Bach: Baroque
Mozart: Classical

- Musical Analysis: Lichner** 10

- moderate tempo
- eighth and half notes
- accidentals

21. a. I $\overset{5}{3}$

b. ii $\overset{6}{3}$

c. I $\overset{6}{4}$

d. $\overset{7}{V}$

- M6
- m3
- m7

- Musical Analysis: Gurlitt** 9

- g minor
- with motion
- \downarrow
- medium loud and gradually softer
- a. c minor
b. B \flat Major
c. a diminished
d. D Dominant 7
- Romantic